

2005  
CASCADE EARLY MUSIC FESTIVAL

CONCERTS

Five exciting concerts with internationally recognized performers of early music reveal new aspects of this vast realm. Icicle Creek Music Center's Canyon Wren Recital Hall and the Sleeping Lady Chapel Theatre provide ideal venues for intimate early music performance. Food and lodging possibilities abound in nearby Leavenworth, including gourmet meals and premium lodging at Sleeping Lady Mountain Retreat. A *Concert Pass* for all performances and a *Festival Pass* for all concerts and lecture-demonstrations are available.

WORKSHOPS

Daily workshops offer instruction in keyboard (harpsichord, fortepiano and organ), baroque violin, viola da gamba, baroque cello, early transverse flutes, baroque oboe and baroque dance, alongside lecture-demonstrations, forums and concerts. The Grinewald Guild provides an exquisite setting, comfortable lodging and healthful meals including garden produce. The Icicle Creek Music Center, completed in 2003, is an artistic retreat, music education facility and performance venue located at the mouth of the Icicle Canyon. ☞ Tuition (\$420 or \$350 for the baroque dance workshop), includes admission to concerts and lecture demonstrations. Applicants are requested to submit a \$50 deposit, contact information and a summary of educational and performance experience (see [www.cemf.org](http://www.cemf.org)).

Sponsored by the Icicle Fund, the Grinewald Guild and the Icicle Creek Music Center, the Festival provides an exciting opportunity for dialogue across artistic discipline, time and culture.

2005 CRISTOFORI PROJECT

Acclaimed historical keyboard instrument builders Thomas and Barbara Wolf have completed the most authentic reproduction to date of the 1722 fortepiano by Bartolomeo Cristofori, to be featured in performances of solo works, chamber music, and in workshop and lecture-demonstration with Edwin Good and Hans-Jürgen Schnoor. This extensive opportunity to experience the unique expressive qualities of one of the most remarkable and influential keyboard instruments is not to be missed!

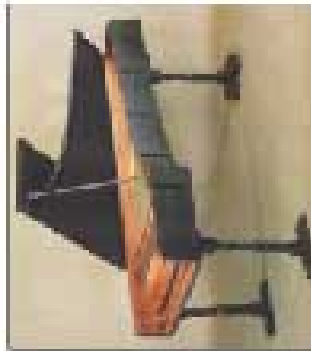
(800) 281-8026 ❖ [cascadefestival@aol.com](mailto:cascadefestival@aol.com)  
❖ [www.cemf.org](http://www.cemf.org) ❖



2005 CASCADE EARLY MUSIC FESTIVAL

1044 NE 98th Street \* Seattle, Washington 98115  
(800) 281-8026 \* [www.cemf.org](http://www.cemf.org)

Bartolomeo Cristofori  
~ 350th anniversary (1655-1731) ~



- ~ Five Festival Concerts (7:30 PM) ~  
— The Goldberg Variations (Aug. 22 • Grinewald Guild)  
— Cristofori in Florence and Dresden (Aug. 23 • Sleeping Lady Chapel Theatre)  
— Hamburg: Abendmusic (Aug. 25 • Canyon Wren Recital Hall)  
— The Baroque Piano & J.S. Bach (Aug. 26 • Canyon Wren Recital Hall)  
— Festive Baroque Concerti (Aug. 27 • Canyon Wren Recital Hall)



August 22- 28, 2005 at Icicle Creek

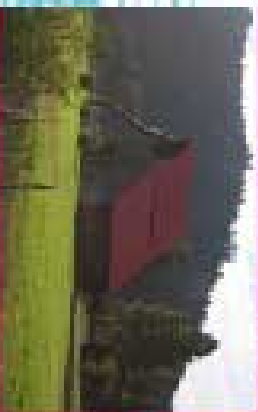
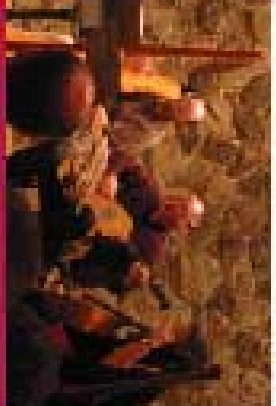
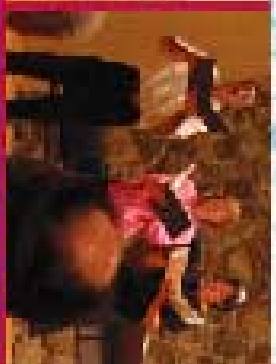
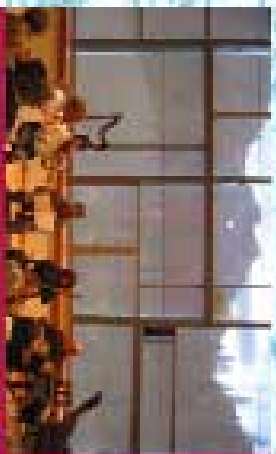
~ artists / faculty ~

Ingrid Matthews - *baroque violin*  
Hans-Jürgen Schnoor - *harpsichord & fortepiano*  
Susie Napper - *viola da gamba & cello*  
Bruce Haynes - *baroque oboe*  
Jeffrey Cohan - *renaissance & baroque flutes*  
Anna Mansbridge - *baroque dance*

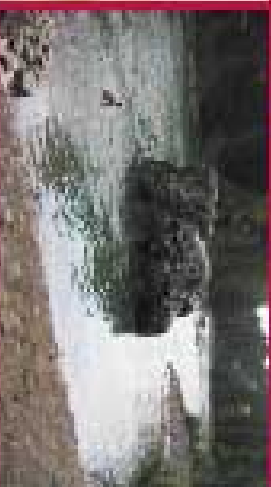
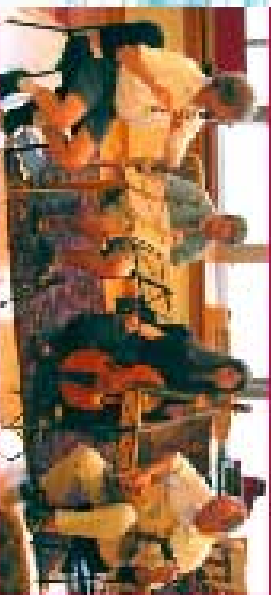
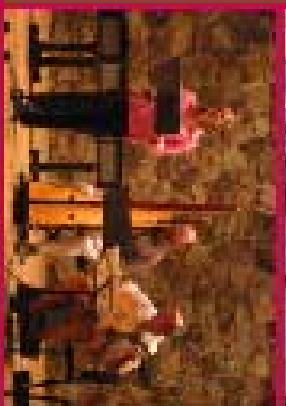
Beneath Ponderosa pines beside glacier-fed Icicle Creek and the Wenatchee River in the Cascade Mountain foothills near Leavenworth, Washington, five exceptional period instrument performances and ground-breaking workshops feature Bartolomeo Cristofori's 1722 fortepiano with leading interpreters of early music. Lecture-demonstrations and forums examine the Cristofori piano with Edwin Good and Hans-Jürgen Schnoor, European musical pitch in 1700, Quantz and the Baroque Dynamic and Authenticity and Happiness: Paradox and Serendipity in Ancient Music, part 2.

Cascade Early Music Festival

❖ (800) 281-8026 ❖  
[cascadefestival@aol.com](mailto:cascadefestival@aol.com)  
[www.cemf.org](http://www.cemf.org)



Cascade  
**EARLY  
 MUSIC**  
 FESTIVAL &  
 WORKSHOPS



August 22-28, 2005 at Iclicle Creek Celebrating the Baroque Fortepiano and the 350th anniversary of the birth of Bartolomeo Cristofori

- baroque violin Ingrid Matthews
- early flutes Jeffrey Cohan
- viola da gamba & cello Susie Napper
- baroque oboe Bruce Haynes
- harpsichord & fortepiano Hans-Jürgen Schnoor
- baroque dance Anna Mansbridge

**concerts:**

- The Goldberg Variations - August 22
- Hans-Jürgen Schnoor, solo harpsichord
- Cristofori in Florence & Dresden - August 23
- Heinrich, Zelenka, Froberger, Veracini
- Abendmusik in Hamburg - August 25
- with Margriet Tindemans, viola da gamba
- Weckmann, Telemann, CPE Bach, Matheson
- The Baroque Piano & J.S. Bach - August 26
- Musical Offering trio sonata, solo violin Partita
- Festive Baroque Concerti - August 27
- with Alicia Yang, violin / Stephen Creswell, viola
- J.S. Bach, Quantz, C.P.E. Bach, Heinrichen

**CASCADE EARLY MUSIC FESTIVAL**

❖ (800) 281-8026 ❖  
 cascadedfestival@aol.com  
 www.cemf.org

**ca** The second annual Cascade Early Music Festival features an international roster of artists and the beautiful new reproduction by Thomas and Barbara Wolf of the 1722 fortepiano by Bartolomeo Cristofori. 2.5 hours east of Seattle near Leavenworth, Washington at the Iclicle Creek Music Center, the Grünewald Guild and Sleeping Lady Mountain Retreat in the Cascades' Wenatchee River watershed.

**lecture-demonstrations:**

**ca** Quantz and the Baroque Dynamic, Pitch in 1722, Authenticity and Happiness: Paradox and Serendipity and two events featuring Bartolomeo Cristofori and his new invention: the piano!

**workshops:**

**ca** Workshop participants and faculty dine together and are lodged at the Grünewald Guild in Plain. Workshop tuition: \$420; some scholarship assistance available. Workshop lodging \$180 (dbl, 6 nights); meals \$140 (17 meals) or by the meal/night: Dance workshop \$350. Camping, RV hookups and hotels available.